



JMS GROUP  
**PRIDE AVENUE**  
SECTOR 95A, GURUGRAM

JMS GROUP  
**PRIDE AVENUE**  
SECTOR 95A, GURUGRAM



 **JMS Group, M3M Tee Point, 7th Floor, North Block, Sector 65, Gurugram, Haryana -122018**  
 **8010000777**  **[www.jmsgroup.co.in](http://www.jmsgroup.co.in)**

Disclaimer: "Promoter/Company has registered the Commercial Project- "JMS Group Pride Avenue" before HARERA, Gurugram and has obtained Registration No. 118 of 2024 dated 09/12/2024 (Memo No. RC/REP/HARERA/GCM/891/623/2024/118) ([www.haryanarera.gov.in](http://www.haryanarera.gov.in))  
The pictures, images, designs, specifications, information, content and other details herein are merely an indication for the purpose of depicting the appearance of the project "JMS Group Pride Avenue" of the Company/Promoter M/s JMS Buildwell Realty Pvt. Ltd. and is for general information only. The said information etc. provided herein is only for guidance and must not be relied on as such and shall not be construed as an advertisement for marketing purposes, offer for sale, assurance, invitation to offer, contract of any nature whatsoever or gives warranty of any kind, implied express or statutory and shall have no binding effect on the Company/Promoter. The said information etc. is subject to change without any notice or intimation whatsoever. Any decision of buying or investing in the project of Company/Promoter should be upon complete verification of all the details including type of inventories, amenities, area, specifications, services, approvals, permissions and other relevant terms independently with the authorized sales team of the company/promoter, at the company's/promoter's offices/site offices. Company/Promoter, their affiliates, nor any of their respective directors, officers, employees, agents or representatives shall not be liable for any loss, expenses or damage including, without limitation, indirect or consequential loss or damage or any expense, loss or damage etc. whatsoever arising from use, or loss of use, of data/information etc. and shall also not be liable for any expenses, loss or damages of any kind arising from the information etc. or any inaccuracy in the information etc. mentioned herein \* T&C Apply.



# A Destination Where Style And Taste Unite

JMS Group Pride Avenue is strategically positioned to attract a steady flow of foot traffic from the affluent residents of The Pride and beyond. Designed to cater to the diverse needs of both retailers and shoppers, JMS Group Pride Avenue stands as a beacon of retail sophistication and vibrant community life.



\*Artistic Impression





JMS GROUP  
**PRIDE AVENUE**

The Epicenter of  
*Retail Brilliance*





## Retail Excellence *Redefined*

Staying true to its name, JMS Group Pride Avenue provides a rich choice of shops and is viewed as a beacon of luxurious shopping. Filled with carefully chosen brands that balance tradition and modernity, it becomes the ultimate shopping destination for fashion lovers, technology geeks and discerning customers



## A Retail *Revolution*

JMS Group Pride Avenue is the epitome of luxury retail made specifically for you. With multiple shops ranging from retail to cuisine, it successfully combines lifestyle and leisure.







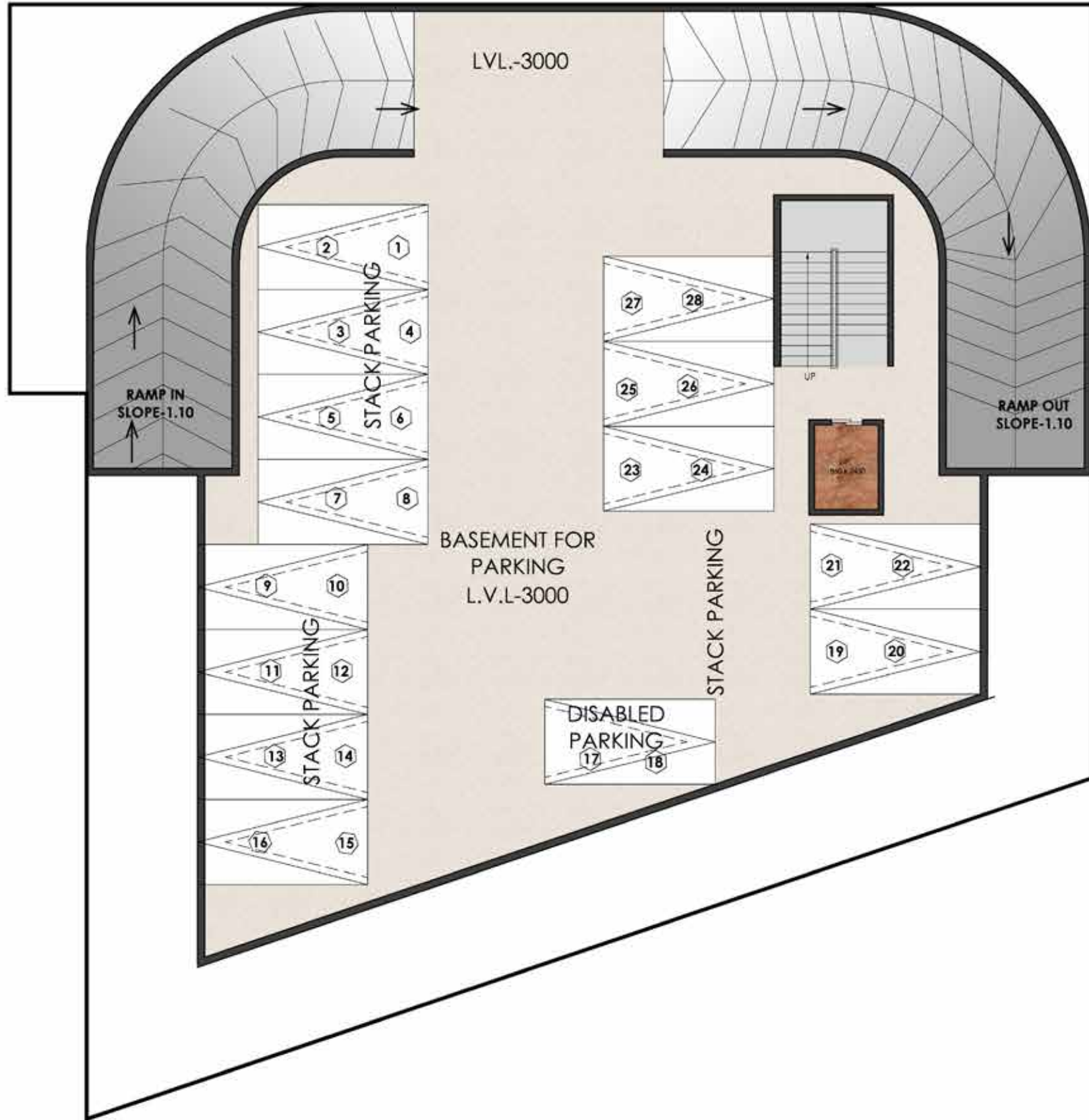
Culinary

# Delights Await

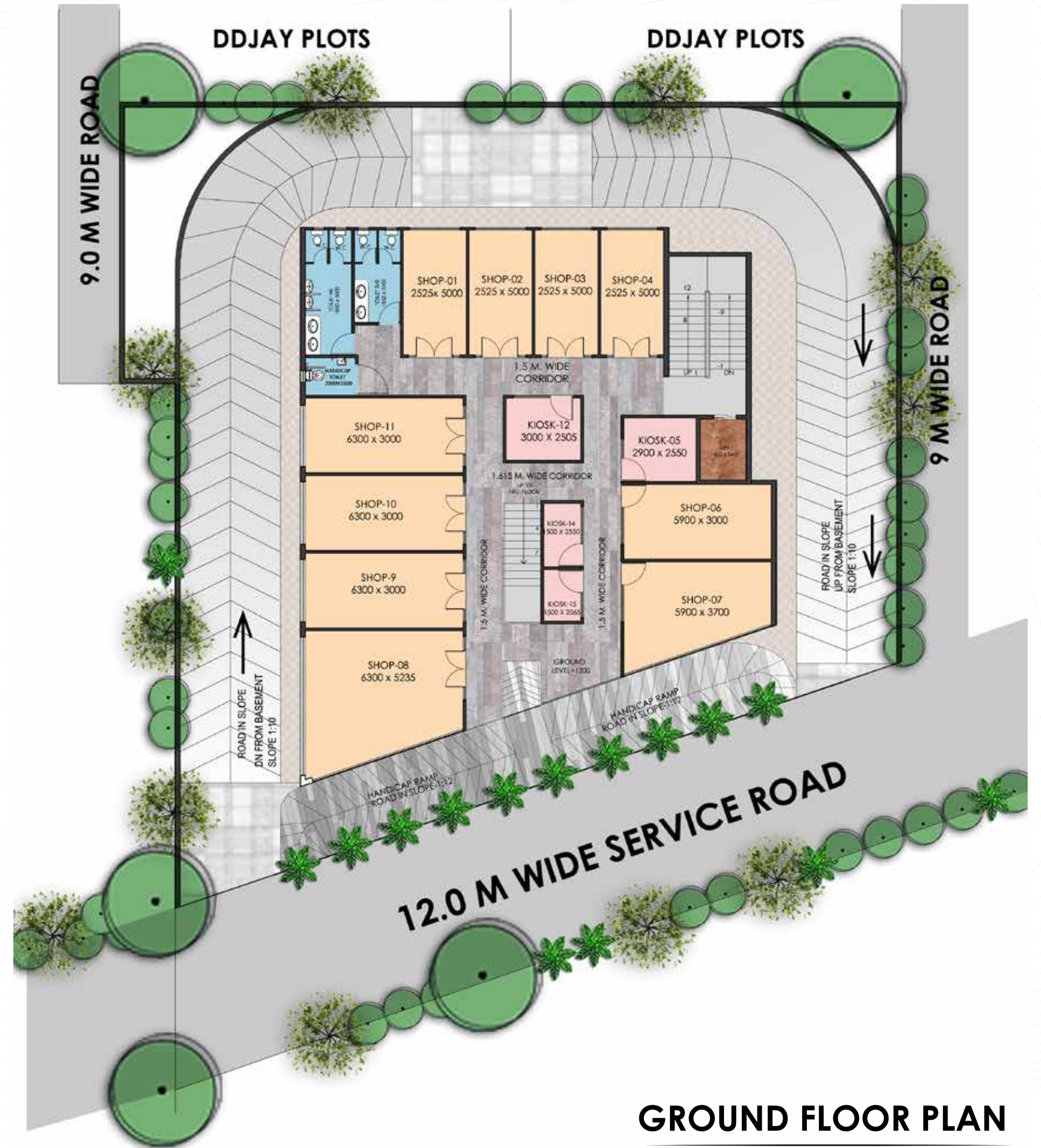


Tour JMS Group Pride Avenue's eclectic food court, where you can taste most of the mouth-watering flavours. Options vary from gourmet food to fast food, making this dining experience an unforgettable pleasure and exciting shopping experience.





**BASEMENT FLOOR PLAN**

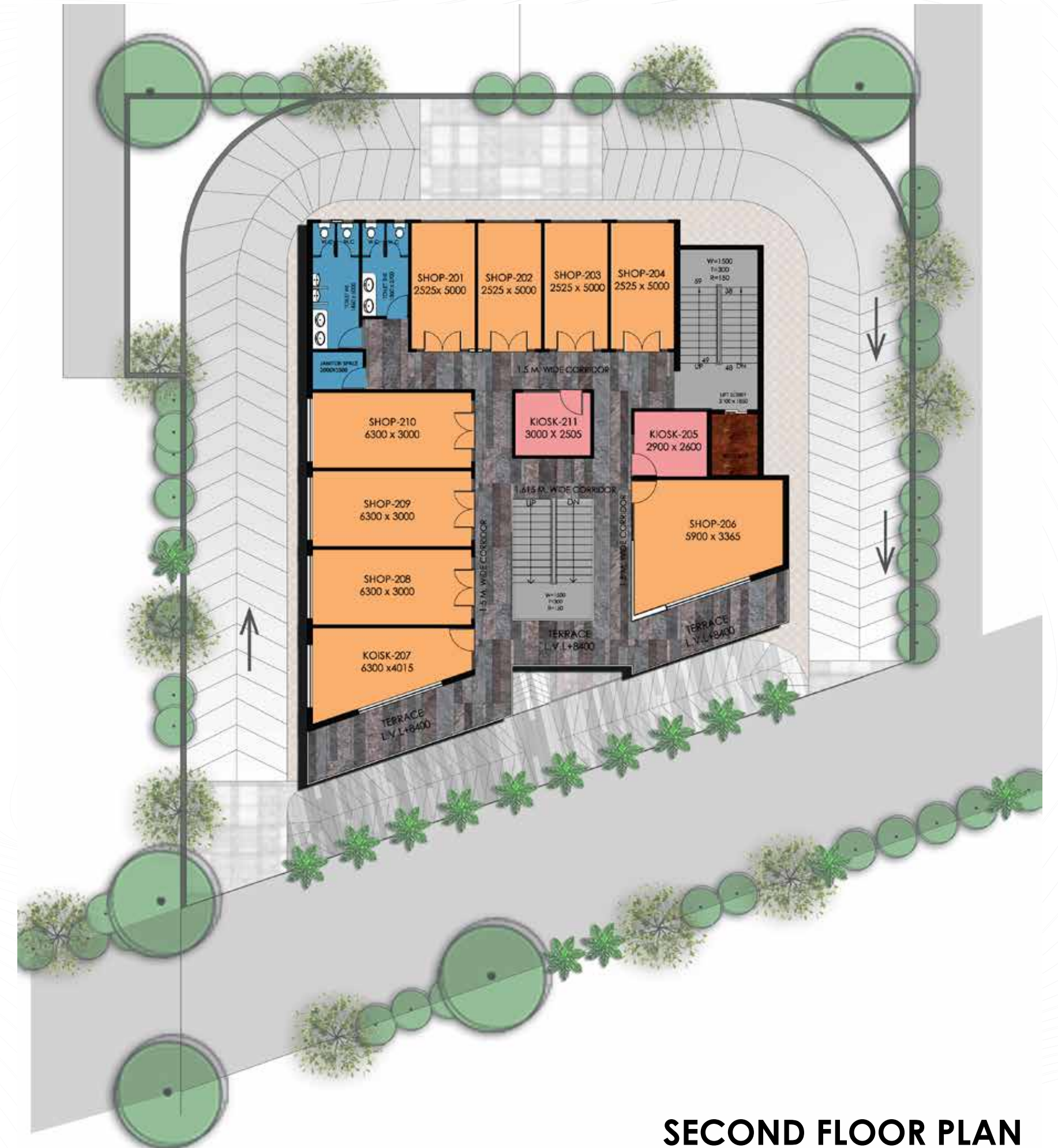


**GROUND FLOOR PLAN**



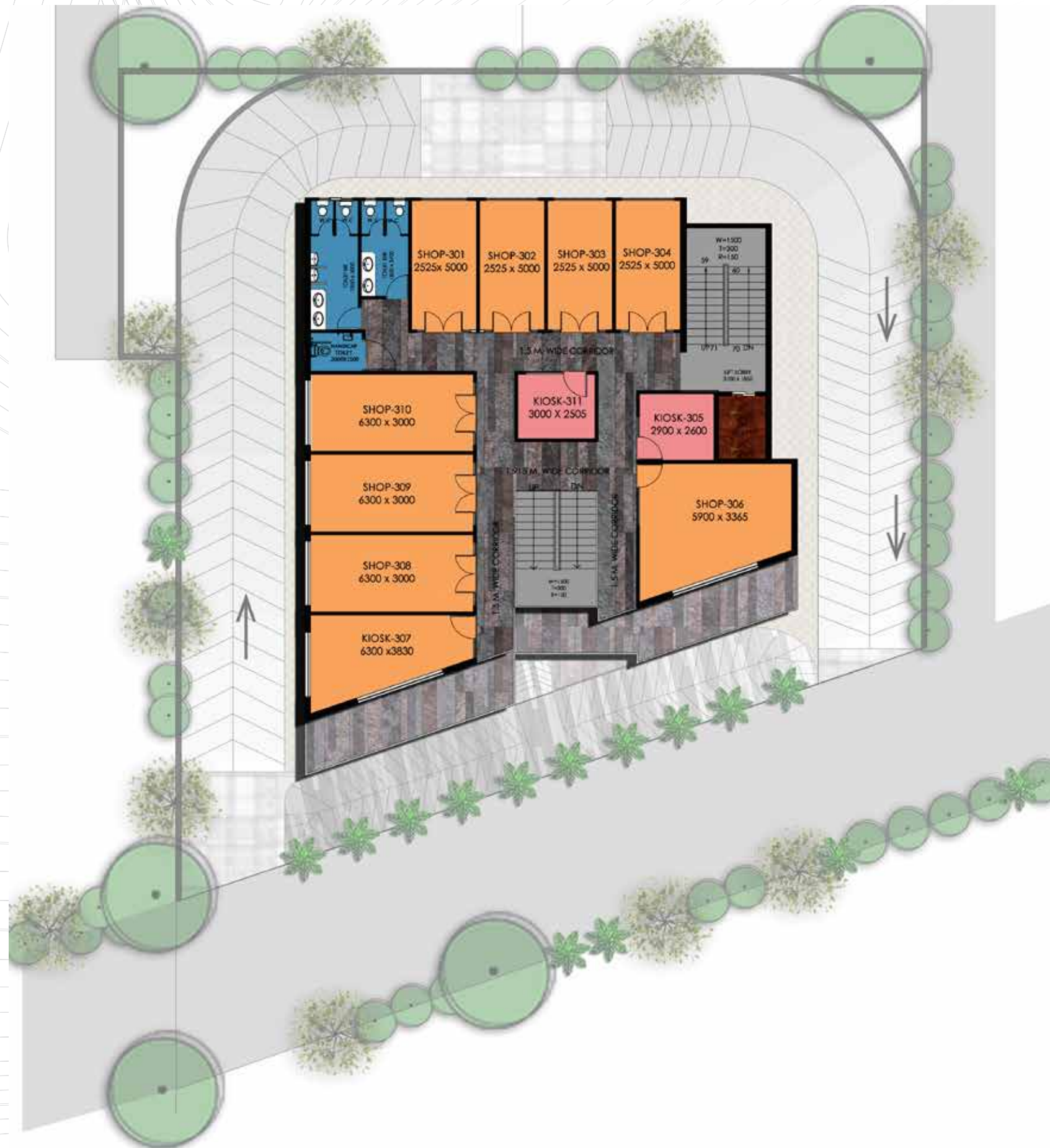


**FIRST FLOOR PLAN**

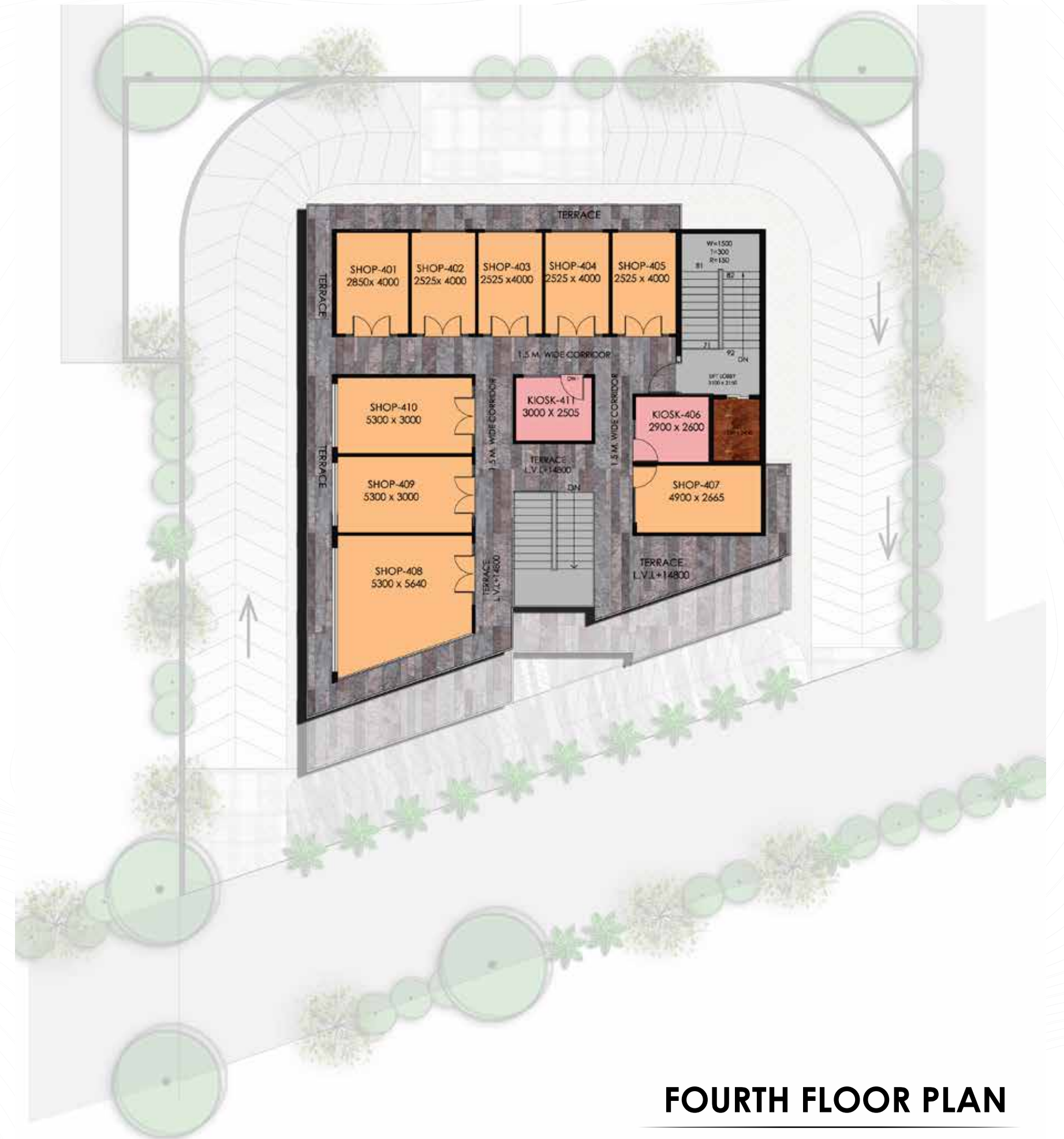


**SECOND FLOOR PLAN**





**THIRD FLOOR PLAN**



**FOURTH FLOOR PLAN**



## A Perfect *Paradise*

JMS Group Pride Avenue's location is cited as primary and perfectly positioned. Located in a well-populated area and close to major freeways, JMS Group Pride Avenue has the best visibility. It is well-situated, attracts visitors, and has adequate space for shoppers and food shops. It is not just an address—It is a part of the community where retail and lifestyle complement each other.



\*Not to Scale



## Location

# Advantages

- ◆ Close to 84 meter wide road, alongside proposed 24 meter road.
- ◆ Accessibility from Delhi Airport
- ◆ Easy smooth connectivity from Pataudi Road, Northern Peripheral Road, NH 48 & KMP Expressway.
- ◆ Close to industrial area, such as Manesar & Kadipur.
- ◆ Close to industrial units Alcatel Lucent, Hero Moto Corp & Maruti.
- ◆ Educational institutes like SGT Group of Institutes, Sharda International School, Colonel's Public School & Yaduvanshi Schoolare in vicinity.
- ◆ Premium residential and commercial projects in proximity.

## LOCATION MAP





# Our Projects



Situated at Sector 93, Gurugram, Crosswalk is a marvel of craftsmanship and luxury. With its intricate, Spanish-style architecture and serene ambiance, it is the perfect destination for discerning customers who want to experience luxury retail at its best. Spanning over two acres, Crosswalk offers a unique shopping experience unlike any other.

HARERA No. 07 of 2019  
RC/REP/HARERA/GGM/313/45/2019/DATED 18/02/2019  
website: [www.haryanarera.gov.in](http://www.haryanarera.gov.in)  
Promoter Name: M/s JMS Buildtech Pvt. Ltd.



Marine Square is an epitome of fine craftsmanship and luxurious indulgence. With its exquisite Spanish-style architecture and tranquil ambiance, it serves as an ideal destination for discerning customers who seek an unparalleled experience of luxury retail. Spanning over two acres, Marine Square offers a shopping experience that is truly distinctive and unmatched.

HARERA No. 22 of 2018  
HARERA-2018/1397/297 DATED 02/02/2018  
website: [www.haryanarera.gov.in](http://www.haryanarera.gov.in)  
Promoter Name: M/s JMS Buildtech Pvt. Ltd.



The Nation is a masterpiece of opulence and artistry. With its captivating architecture and tranquil surroundings, it presents an idyllic haven for individuals seeking the epitome of residential plots. Expanding over expansive acres, The Nation offers an unparalleled living experience beyond compare.

HARERA No. 89 OF 2023  
RC/REP/HARERA/GGM/745/477/2023/89 DATED 11/09/2023  
website: [www.haryanarera.gov.in](http://www.haryanarera.gov.in)  
Promoter Name: M/s JMS Infra Reality Pvt. Ltd.



The Pride epitomizes the artistry of fine design and unparalleled extravagance. Its intricate architectural mastery and tranquil surroundings provide an idyllic sanctuary for those in pursuit of residential magnificence. Encompassing expansive grounds, The Pride crafts an extraordinary living journey that transcends every expectation.

HARERA No. 118 of 2022  
RC/REP/HARERA/GGM/643/375/2022/118 DATED 13/12/2022  
website: [www.haryanarera.gov.in](http://www.haryanarera.gov.in)  
Promoter Name: M/s JMS Buildwell Realty Pvt. Ltd.



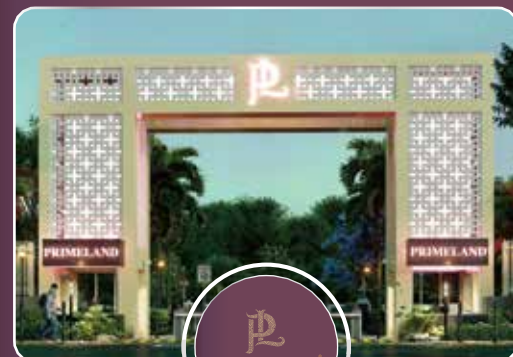
Step into a world where every moment with your family is precious. Our celebration of joy, love, and togetherness is woven seamlessly into the fabric of each day. Nestled in Sector 95, Gurugram, The Pearl offers excellent connectivity to the vibrant city life while providing an oasis of peace, serenity, and tranquility for a truly peaceful residence.

HARERA No. 06 of 2024  
RC/REP/HARERA/GGM/779/511/2024/06 DATED 30/01/2024  
website: [www.haryanarera.gov.in](http://www.haryanarera.gov.in)  
Promoter Name: M/s JMS Infra Reality Pvt. Ltd.



Mega City, exquisite residential plots, offers a magnificent living experience. Equipped with a modern clubhouse, and top-notch amenities, residents can indulge in a luxurious mega lifestyle. Enjoy the perfect blend of urban convenience and opulent comfort at Mega City.

HARERA No. 64 of 2023  
RC/REP/HARERA/GGM/720/452/2023/64 Dated 23/05/2023  
website: [www.haryanarera.gov.in](http://www.haryanarera.gov.in)  
Promoter Name: M/s JMS Infra Build Pvt. Ltd.



Primeland exemplifies the pinnacle of upscale living. With meticulous design, a serene ambiance, and unwavering attention to every detail, it stands as the ultimate choice for those in pursuit of an extraordinary residential lifestyle. Primeland provides an exceptional living environment unmatched in every way.

HARERA No. 03 of 2021  
RC/REP/HARERA/GGM/435/167/2021/03 Dated 18/01/2021  
website: [www.haryanarera.gov.in](http://www.haryanarera.gov.in)  
Promoter Name: M/s JMS Buildwell Realty Pvt. Ltd.



JMS Premier Floors, nestled within the expansive and vibrant community of The Nation. Situated amidst 22.35 acres of beautifully designed landscapes of The Nation, Premier Floors is designed for you and your family, offering amenities for everyone; for you, your parents, your children and more, ensuring a harmonious and enjoyable living experience.

HARERA No. 28 of 2024  
RC/REP/HARERA/GGM/801/533/2024/28 DATED 18/03/2024  
website: [www.haryanarera.gov.in](http://www.haryanarera.gov.in)  
Promoter Name: M/s JMS Infra Reality Pvt. Ltd.



Capital Square is a high-street commercial located in Sector 95, Gurugram. It is an ultimate destination to shop, savor and smile. Located near major highways and established neighbourhoods, Capital Square combines convenience and elegance, creating an environment that appeals to discerning families and professionals. It offers easy access, high visibility and a business-friendly environment.

HARERA No. 82 of 2024  
RC/REP/HARERA/GGM/855/587/2024/82 DATED 02/08/2024  
website: [www.haryanarera.gov.in](http://www.haryanarera.gov.in)  
Promoter Name: M/s JMS Infra Reality Pvt. Ltd.



# We are JMS GROUP

We stand as a forward-thinking force in the real estate realm, reshaping the NCR with unwavering commitment, honesty, and clarity. Our dedication to fulfilling promises and nurturing unity forms the bedrock of enduring relationships. Infused with unmatched professionalism, we transform the real estate landscape through innovations. Embark on a journey with us to witness unparalleled experience and forge enduring connections as we propel forward with unwavering dedication to excellence.

## Building Tomorrow, *Together*



\*Artistic Image